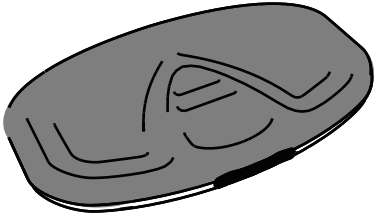
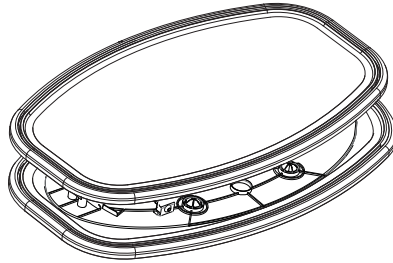


Big Quick Counter

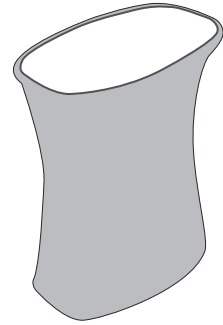
Parts list



Black carry bag

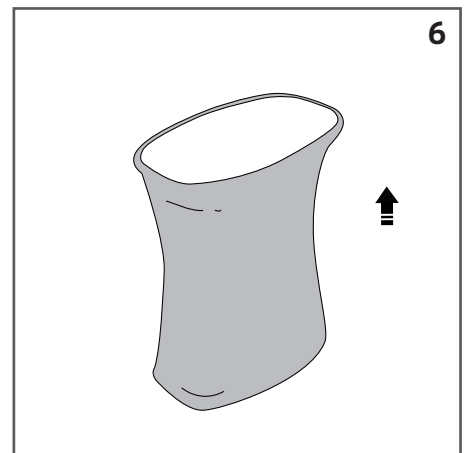
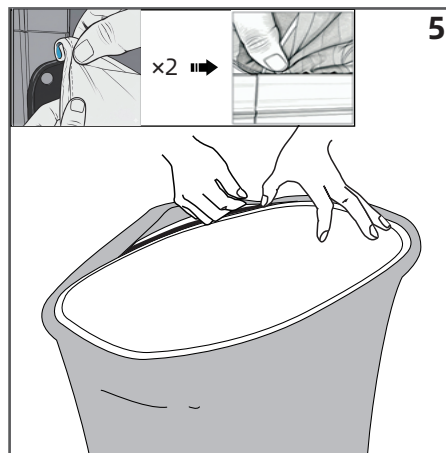
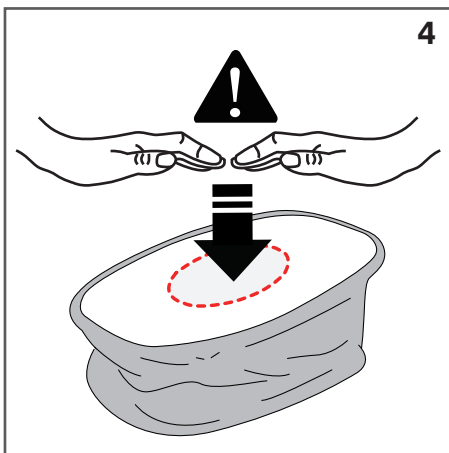
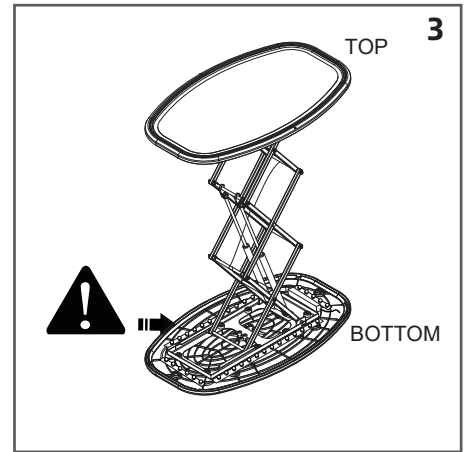
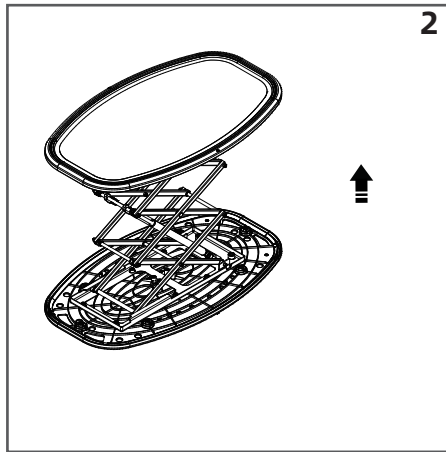
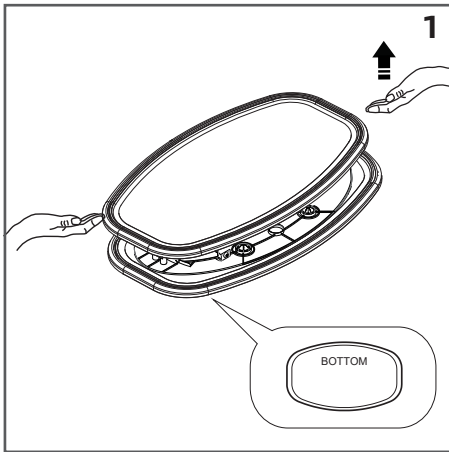


Big quick LED counter



Printing (if ordered)

Installation Steps



Big Quick Counter

Installation instructions

1. **Unpacking:** Remove the reception desk from the black carrying bag and place it on level ground. Ensure the side marked "Bottom" is facing down.

2. **Lifting:** Grasp both sides of the tabletop with both hands and slowly lift it upward.

3. **Deployment:** Continue lifting until the desk is fully extended and locked into its upright position.

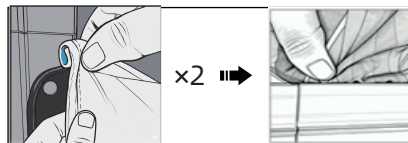
4. Fabric Installation Preparation

CAUTION: Ensure the counter is in its folded position when installing the graphic.

5. Fabric Installation

- Match the mark "▲" on boards to install the fabric on top counter board;
- Fold the silicone edge over twice as shown in the diagram. This creates a thicker edge for a more stable connection with the slot.

As picture below:



- Start the assembly with mark. Insert the silicone edge into channel of the board, paying attention to its correct positioning inside the board.
- Edge Installation. After securing the corners, press the silicone edge into the channel on board. Apply even pressure around the counter board;
- Repeat last step to install the SEG fabric on the top counter board;

6. Tension Check

Ensure that the graphic is evenly tensioned and that the fabric does not form folds or wrinkles. If necessary, gently adjust the silicone edge inside the board channel.

Important Notes for use

1. Use only in dry indoor areas.
2. Protect from moisture, direct contact with water, and extreme temperatures.
3. Recommended operating temperature: +10°C to +35°C.
4. Assembly must be carried out in accordance with the manufacturer's instructions.
5. It is prohibited to: modify structural elements, use nonoriginal parts, apply excessive force when assembling the frames.
6. Before each assembly, check: completeness of the set, absence of mechanical damage to profiles and connectors.
7. It is not allowed to: lean on the structure, sit on it, hang additional elements (lighting, monitors, decorations) if they are not provided for this system.
8. The structure is not intended for use by children.
9. Transport the structure in dedicated bags or cases, protected against impacts and scratches.
10. The structure should be stored: in a dry room, in a horizontal position or in accordance with the manufacturer's recommendations.
11. The structure should not be stored loose or under heavy pressure from other elements/structures.
12. The manufacturer shall not be liable for: damage resulting from improper assembly, use contrary to its intended purpose, or unauthorized modifications of the structure.
13. Prints should be stored in dry and stable conditions: at a relative humidity of 40-50% and a temperature of 15-25°C. Exposure to direct sunlight, as well as bending, crushing, or pressure, should be avoided. If it is not possible to ensure the conditions described above, there is a risk of ink migration and adhesion between layers of the medium. Therefore, the use of interleaving sheets (e.g. uncoated paper) between individual layers is recommended to reduce the risk of surfaces sticking together. Interleaving sheets are not included in the set and must be provided separately.